

Further update to Water Framework Directive Cycle 2 Groundwater bodies, January 2016

In cycle 1 of the Water Framework Directive (WFD), from 2004 to 2009, groundwater bodies (GWB) were delineated based on their physical characteristics and where associated pressures or receptors were to be separately managed e.g. for point source or wetlands. European Commission WFD CIS Guidance document No. 2 (2003), on the delineation of waterbodies, states physical characteristics **and** the likely WFD status of the waterbody should be used to set GWB units. The new cycle 2 GWB (originally released in May 2015) have this stronger relationship to WFD environmental objectives than the cycle 1 GWB.

Since May 2015, further edits have been made.

- (i) The May 2015 groundwater bodies included 2 overlapping water bodies for different groundwater strata (horizons). This was required for reporting (see WFD Reporting Guidance 2016)¹ⁱ.

• ¹ *“Horizon assignment is just a tool for harmonisation to enable coherent visualisation of GWBs at the European level and to support transboundary coordination. It is therefore solely a matter of reporting”.*

As the horizons weren’t practical to maintain, they have been removed from this January 2016 release of groundwater bodies, and will only be used in the WFD reporting for River Basin Management plans.

- (ii) The European Commission have clarified that each Member State should only report on its own part of transboundary waterbodies. This January 2016 release of groundwater bodies has the waterbodies clipped by the Northern Ireland (NI) border (as agreed with Northern Ireland Environment Agency). As a result 5 Groundwater body features in this dataset will not be managed (features with EU_CD field beginning with “GBNI”) by Ireland. Some edits were made to the geometry of cross border features to align the features with the NI border.
- (iii) Some groundwater body names have changed.
- (iv) “Holes” with gravel groundwater bodies have been corrected.

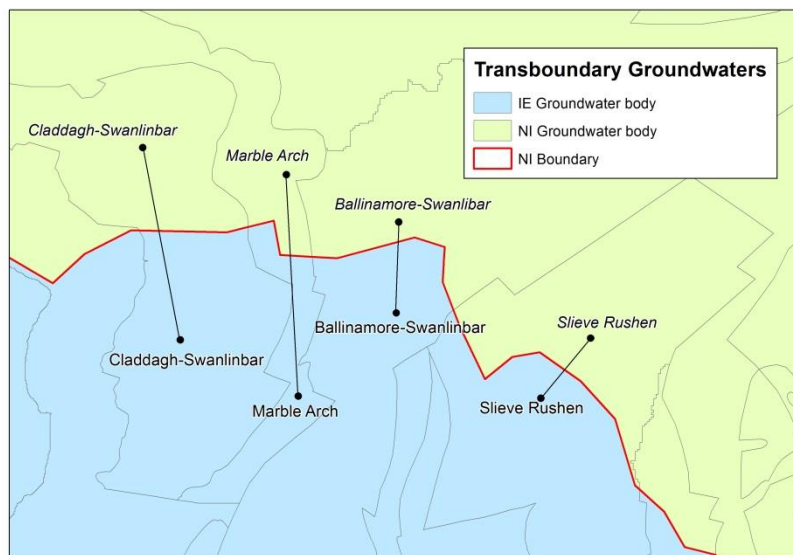


Fig 1 shows examples of cross border groundwater bodies

Where can I get the new data?

You can view the new GWB (with their 2007-2012 status classification) under the WFD Status group of [EPA Maps](http://gis.epa.ie/Envision). (<http://gis.epa.ie/Envision>).

You can download GIS files of the new GWB from the Get Data section of the EPA Geoportal.

If you have any queries please [Contact Us](http://gis.epa.ie/ContactUs) on the EPA Geoportal. (<http://gis.epa.ie/ContactUs>)

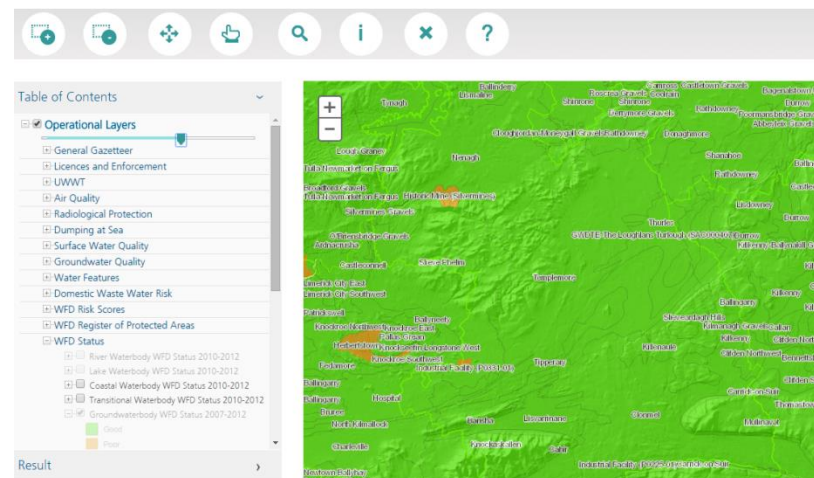


Fig 2 shows the Groundwaterbody status data available to view on EPA Maps